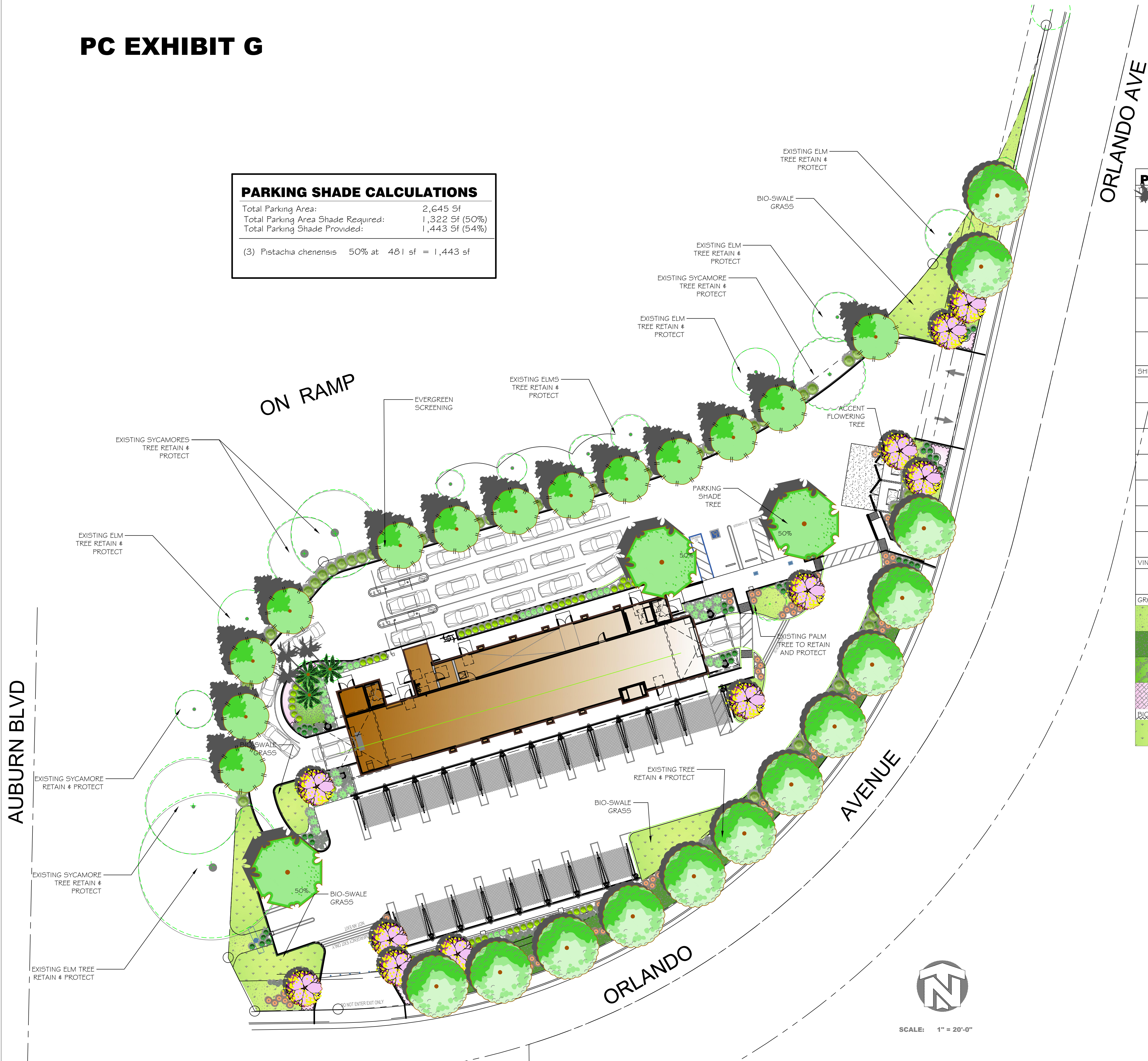


PC EXHIBIT G

PARKING SHADE CALCULATIONS	
Total Parking Area:	2,645 Sf
Total Parking Area Shade Required:	1,322 Sf (50%)
Total Parking Shade Provided:	1,443 Sf (54%)
(3) Pistacia chenensis 50% at 481 sf = 1,443 sf	



PLANT SCHEDULE			
BOTANICAL / COMMON NAME	CONT	QTY	
Existing Palm / Relocated Palm	Transplanted	3	
Geijera parviflora / Australian Willow Low Water / WUCOLS	15 gal	13	
Lagerstroemia indica 'Muskogee' (Strnd) / Muskogee Crape Myrtle Low Water / WUCOLS	24" Box	11	
Pistacia chinensis 'Keith Davey' / Keith Davey Chinese Pistache Low Water / WUCOLS	15 gal	3	
Fyrus calleryana 'Anstocrat' / Anstocrat Gallery Pear Low Water / WUCOLS	15 gal	13	
SHRUBS	BOTANICAL / COMMON NAME	SIZE	QTY
Agapanthus orientalis 'BLUE' / Blue' Lily of the Nile Medium Water / WUCOLS	5 gal	24	
Callistemon viminalis 'Little John' / Dwarf Bottlebrush Low Water / WUCOLS	5 gal	55	
Diets bicolor / Fortnight Lily Low Water / WUCOLS	5 gal	76	
Muhlenbergia capillans 'Pink Cloud' / Pink Muhly Low Water / WUCOLS	1 gal	87	
Myrtus communis 'Compacta' / Dwarf Myrtle Low Water / WUCOLS	5 gal	24	
Nandina domestica 'Compacta' / Dwarf Heavenly Bamboo Low Water / WUCOLS	5 gal	66	
Pennisetum setaceum 'Rubrum' / Purple Fountain Grass Low Water / WUCOLS	1 gal	100	
VINE/ESPALIER	BOTANICAL / COMMON NAME	SIZE	QTY
Ficus pumila / Creeping Fig Medium Water / WUCOLS	5 gal	5	
GROUND COVERS	BOTANICAL / COMMON NAME	CONT	QTY
Hypencum calycinum 'Fiesta' / St. John's Wort Low Water / WUCOLS Spaced at 36" o.c.	1 gal	269	
Juniperus horizontalis 'Blue Rug' / Blue Rug Juniper Low Water / WUCOLS Spaced at 36" o.c.	1 gal	413	
Mahonia repens / Creeping Mahonia Low Water / WUCOLS Spaced at 36" o.c.	1 gal	57	
Verbena peruviana 'Little Pinkie' / Little Pinkie Verbena Low Water / WUCOLS Spaced at 18" o.c.	1 gal	107	
BIOSWALE	BOTANICAL / COMMON NAME	CONT	QTY
'Bio Filtration' Sod / By Delta Bluegrass-Phone (800-637-8873) Medium Water / WUCOLS	sod	2,567 sf	

- NOTES:**
- Landscape shall be designed per City of Roseville & Placer County landscape design requirements and California MWEL.
 - No groundcover or shrubs are to be planted within 3' of any tree trunk.
 - A landscape soils test shall be analyzed by a soils testing laboratory. Soils shall be amended per soil analysis report recommendations prior to Landscape Installation.
 - This project shall be irrigated by an automatic irrigation system consisting of subsurface drip for shrubs and groundcover, and deep watering bubblers for all trees all connected to a smart controller.
 - All planter areas shall receive a three-inch (3") mulch of red fir walk-on bark. All groundcover areas shall receive a two-inch (2") layer of bark mulch.

REVISIONS	BY

CAROL PERRY BROWN
 Landscape Architecture
 Irrigation Design
 Certified Irrigation Designer
CID
 Irrigation Association
 530 823 2621
 perrydesign@att.net
 RLA 3941 CID 002624

PERRY DESIGN
 BE SHINE CAR WASH
 1100 Orlando Avenue
 Roseville, CA.



PRELIMINARY PLANTING PLAN

Date August 22, 2022
 Scale 1" = 20'-0"
 Drawn Carol B.
 Job
 Sheet LP-1
 Of Sheets